

## Monthly Weather Summary in Thailand May 2020

In May 2020, hot weather persisted in Thailand nearly the whole month especially during the beginning of May that successive of very hot weather was presented in the northern, northeastern and upper central parts due to the covering of the heat low pressure cell over upper Thailand. Mean temperature was higher than normal in every parts with the average value for the whole country of 1.8°C above normal and the new highest record of maximum temperature was established in some places. However, due to the periodically prevailing of southerly and southeasterly winds over upper Thailand in addition with the extending of high pressure area from China over upper Thailand caused thunderstorm and gusty wind in many areas. Besides, the southwest monsoon prevailing over the Andaman Sea and Thailand from the middle of the month, the monsoon trough lying across upper northern and upper northeastern region and the low pressure cell covering the Gulf of Tonkin during the end of the month caused increasing in both amount and distribution of rain during that time leading to rainy season of Thailand on May 18. However monthly rainfall was lower than normal in most parts i.e. northern part 98.2 mm (55%), northeastern part 30.2 mm (16%), central part 98.9 mm (57%), eastern part 89.4 mm (40%) and southern part (east coast) 59.3 mm (41%) except for southern part (west coast) was higher than normal 4.4 mm (1%)

**1 - 10 May :** The heat low pressure cell covered upper Thailand almost the period coupled with the southerly and southeasterly winds prevailed over the mentioned areas. These caused generally hot weather in upper Thailand in particular the northern, northeastern and upper central parts experienced successive very hot day in several places. The highest temperature reached 43.0°C at Amphoe Mueang in Nong Khai province on May 6. For rainfall, northern part received isolated to scattered rain almost the period with heavy rainfall in some areas whereas scattered to fairly widespread rain was mainly observed during early period in the northeastern, central and eastern parts after that rainfall decreased. The maximum daily rainfall was 99.0 mm at Klung in Chanthaburi province on May 3. Thundershower with gusty wind was reported at Chiang Mai province on May 1 and 2 and at Phrae province on May 2, and at Lop Buri province on May 3, and at Chiang Rai province on May 4 and at Phayao province on May 4 and 6, and at Phitsanulok and Surin provinces on May 5 and at Chiang Mai and Nakhon Sawan provinces on May 6, and at Lampang province on May 6 and 7, and at Lampang, Sukhothai, Phetchabun, Phichit, Tak, Khon Kaen, Nong Khai, Uthai Thani, Nakhon Sawan and Sing Buri provinces on May 7, and at Chiang Mai and Tak provinces on May 8 and at Chiang Rai, Nan and Loei provinces on May 9, and at Lamphun, Phayao, Nan, Bueng Kan, Surin, Si Sa Ket and Nakhon Ratchasima provinces on May 10. Hail was reported at Tak province on May 8 with flash flooding at Lampang province on the May 9. In southern part, the easterly wind prevailing over the Gulf of Thailand and southern part throughout the period coupled with the covering of the low pressure cell over Head of Sumatra Island during late period resulted in abundant rainfall with fairly widespread rain mainly along the west coast while isolated rain with heavy rainfall in some areas was found along the east coast. The highest daily rainfall was 125.0 mm at Chai Buri in Surat Thani province on May 6.

**11 - 20 May :** Heat low pressure cell dominated over upper Thailand and the southerly and southeasterly wind prevailed over the mentioned areas during the beginning and the middle of the periods, hot weather persisted in upper Thailand with very hot weather in some places. The highest maximum temperature was 42.1°C at Mae Sariang in Mae Hong Son province on May 11. For rainfall, due to the high pressure area from China extended its ridge to cover upper Thailand and there was tropical cyclone “AMPHAN (01B)” in the upper Bay of Bengal which inducing southwesterly wind prevailing over the Andaman Sea and Thailand since May 18. These caused increasing in rainfall in Thailand during late period with scattered to fairly widespread rain and heavy to very heavy rainfall in some areas. The heaviest daily rainfall was 260.0 mm at Ban Dung in Udon Thani province on May 17. Thundershower with gusty wind was reported at Nan, Lamphun, Phayao, Kamphaeng Petch, Phitsanulok, Si Sa Ket, Amnat Charoen, Nakhon Ratchasima, Yasothon, Kanchanaburi, Chon Buri, Chachoengsao provinces on May 11, and at Phrae, Phitsanulok, Sing Buri, Chai Nat, Chachoengsao provinces on May 14, and at Chiang Rai province on May 15, and at Nakhon Sawan province on May 16, and at Nan, Lampang, Kalasin, Amnat Charoen, Surin, Sakon Nakhon, Uthai Thani provinces on May 17, and at Ratchaburi province on May 18, and at Surin province on May 19 with flash flooding at Tak province on May 15. In southern part, hot weather remained almost areas with isolated to scattered rain with heavy rainfall in some places along the east coast while fairly widespread rain with isolated heavy to very heavy rainfall was observed along the west coast. The maximum daily rainfall is 117.5 mm at the Khao Chong Botanical Garden in Trang province on the May 16.

**21 - 31 May :** Under the influence of southwest monsoon over the Andaman Sea and Thailand, the low pressure cell covering Laos and upper Vietnam, the monsoon trough lay across Myanmar, Laos and upper Vietnam to the active low pressure cell over the Gulf of Tonkin before moved downward to lie over upper northern and northeastern parts of Thailand during late period. The weather in upper Thailand was wetter with abundant rainfall almost the period and heavy to very heavy rainfall in some areas especially in the northeastern and eastern parts. The highest daily rainfall was 200.0 mm at Nam Som in Udon Thani province on May 28. Thundershower with gusty wind was reported at Phichit, Udon Thani, Sakon Nakhon, Nakhon Phanom, Khon Kaen, Nakhon Sawan, Chai Nat and Saraburi provinces on May 23, and at Surin, Amnat Chareon, Si Sa Ket and Nakhon Ratchasima provinces on May 25, and at Kamphaeng Phet, Nakhon Sawan and Chai Nat provinces on May 26, and at Phichit province on May 26, 28 and 29, and at Sukhothai and Kalasin provinces on May 27, and at Nan, Lampang, Phayao, Phetchabun, Saraburi, Nakhon Sawan, Chai Nat and Lop Buri provinces on the May 28, and at Phitsanulok and Loei provinces on the May 30. However, hot weather remained in upper Thailand with very hot in some areas of the northern, northeastern and upper central parts. The highest temperature of 41.8 °C was measured at Amphoe Mueang in Udon Thani province on May 23. For southern part, with the prevailing of the southwest monsoon, there was plentiful of rain especially along the west coast that received widespread rain with heavy to very heavy rainfall in many places almost the whole period while scattered to fairly widespread rain with isolated heavy to very heavy rainfall was found along the east coast. The highest daily rainfall of 134.2 mm was recorded at Suk Samran in Ranong provinces on May 21.

-----

### Breaking record of daily maximum temperature over Thailand in May 2020

Station	New Record 2020		Previous Record		Start Year
	Temperature(°C )	Date	Temperature(°C )	Date / Year	
Tha Wang Pha, Nan	41.9	17	41.8	12/2016	1970
Nong Khai	43.0	6	42.8	9/1992	1968
Nakhon Phanom	41.3	9	40.3	7/2003	1953
Nakhon Phanom Agromet. Stn.	41.6	10	40.7	9/1992	1983
Nong Bua Lum Phu	42.8	6	41.1	12/2016	2015
Mukdahan	42.4	9	41.7	1,3/1998	1953
Si Sa Ket	40.5	9	40.2	24/2014	2003
Tha Tum, Surin	41.5	9	41.3	4/1993	1970
Surin Agromet. Stn.	42.0	5	41.2	13/2016	1969
Chachoengsao	40.5	9	40.2	13/1997	1989

**Note** : Rainfall, temperatures and natural disasters in this report were updated up to June 4, 2020

Climatological Center  
 Meteorological Development Division  
 Meteorological Department

Monthly Current Report  
Rainfall and Accumulative Rainfall  
May 2020

Northern Thailand

Station	Temperature ( °c)		Rainfall (mm)		Accumulative rainfall (mm) Since 1 January	
	Mean	Above or below normal	Actual	Above or below normal	Actual	Above or below normal
Chiang Rai	29.1	2.0	70.7	-142.7	160.0	-200.8
Mae Hong Son	30.5	1.6	51.5	-123.0	159.6	-107.3
Phayao	29.6	1.8	145.3	-34.4	292.8	-21.2
Chiang Mai	31.0	2.8	41.4	-120.6	110.7	-139.5
Tha Wang Pha	31.1	3.0	108.7	-74.3	182.9	-152.1
Nan	31.3	2.7	104.3	-73.0	236.2	-89.7
Lamphun	30.8	2.1	98.7	-56.1	186.5	-33.6
Lampang	31.6	2.8	53.1	-107.3	150.4	-110.3
Mae Sariang	30.7	2.3	78.8	-83.5	130.8	-98.4
Phrae	31.3	2.3	176.2	-1.9	235.9	-66.5
Uttaradit	32.1	2.3	76.8	-153.2	161.5	-182.9
Bhumibol Dam	32.0	2.8	29.8	-167.8	77.1	-217.2
Tak	31.9	2.3	107.8	-67.1	183.7	-71.7
Mae Sot	30.9	3.0	16.6	-157.6	54.1	-190.3
Umphang	27.5	1.9	50.1	-144.9	140.7	-219.4
Phitsanulok	31.5	1.6	60.1	-110.8	252.4	-18.3
Lom Sak	30.6	2.0	88.2	-62.6	281.3	1.6
Phetchabun	31.4	2.6	124.3	-38.5	281.4	-27.0
Wichian Buri	31.5	2.1	57.9	-100.2	143.7	-175.2
Kamphaeng Phet	31.7	2.5	52.5	-143.0	113.8	-186.6
Over the area	30.9	2.3	79.6	-98.2 -55%	176.8	-115.4 -39%

Northeastern Thailand

Station	Temperature ( °c)		Rainfall (mm)		Accumulative rainfall (mm) Since 1 January	
	Mean	Above or below normal	Actual	Above or below normal	Actual	Above or below normal
Nong Khai	31.3	2.7	360.2	135.3	485.3	111.6
Loei	30.0	2.3	85.1	-114.2	246.8	-116.8
Udon Thani	31.7	2.8	156.3	-42.2	270.8	-79.8
Nakhon Phanom	31.0	2.6	262.2	5.1	380.1	-72.2
Sakon Nakhon	30.8	2.4	197.8	-29.8	368.2	-44.2
Mukdahan	31.8	3.0	69.4	-130.1	173.0	-162.8
Khon Kaen	31.3	2.4	146.2	-22.5	276.9	-48.9
Kosum Phisai	31.5	2.2	97.0	-64.5	375.6	54.8
Roi Et	31.6	2.6	88.6	-97.5	261.3	-64.7
Chaiyaphum	30.9	2.0	117.8	-22.4	307.3	4.4
Ubon Ratchathani	31.1	2.1	214.8	6.2	272.1	-71.2
Tha Tum	31.0	1.5	49.9	-122.4	107.5	-216.9
Surin	31.2	2.4	118.9	-60.9	210.9	-124.9
Nakhon Ratchasima	30.7	1.6	211.3	57.2	282.7	-5.0
Chok Chai	30.4	1.6	170.2	21.2	252.4	-34.2
Nang Rong	30.3	1.5	165.0	-1.6	336.7	16.3
Over the area	31.0	2.2	156.9	-30.2 -16%	288.0	-53.4 -16%

- NOTES :
- 1) Mean temperature is the average of daily dry-bulb temperature
  - 2) "T" is trace, rainfall amount less than 0.1 mm.
  - 3) "blank" is incomplete data.
  - 4) Temperature and rainfall are preliminary data.

Monthly Current Report  
Rainfall and Accumulative Rainfall  
May 2020

Central Thailand

Station	Temperature ( °c)		Rainfall (mm)		Accumulative rainfall (mm) Since 1 January	
	Mean	Above or below normal	Actual	Above or below normal	Actual	Above or below normal
Nakhon Sawan	32.4	2.4	81.3	-69.4	103.7	-160.0
Bua Chum	31.6	2.3	83.6	-52.6	130.1	-149.1
Lop Buri	32.1	2.5	26.1	-121.0	67.2	-206.1
Suphan Buri	32.0	2.2	23.4	-90.9	53.8	-139.1
Thong Pha Phum	29.9	1.8	133.5	-94.0	258.7	-138.8
Kanchanaburi	31.9	2.2	72.1	-73.2	122.9	-151.4
Bangkok Airport	31.4	1.6	87.0	-120.6	214.8	-142.1
Bangkok Metropolis	31.7	1.8	78.9	-168.8	186.1	-228.4
Over the area	31.6	2.1	73.2	-98.9 -57%	142.2	-164.4 -54%

Eastern Thailand

Station	Temperature ( °c)		Rainfall (mm)		Accumulative rainfall (mm) Since 1 January	
	Mean	Above or below normal	Actual	Above or below normal	Actual	Above or below normal
Prachin Buri	31.4	2.1	66.5	-164.5	172.5	-249.9
Kabin Buri	30.2	1.3	87.1	-105.2	287.8	-88.7
Aranyaprathet	31.1	1.9	52.1	-116.2	263.2	-76.2
Chon Buri	31.2	1.4	114.9	-60.4	347.5	26.4
Ko Sichang	30.4	0.8	47.8	-86.6	163.8	-124.1
Pattaya	30.2	1.0	82.2	-66.1	237.8	-57.7
Sattahip	30.7	1.1	47.1	-124.8	237.1	-117.5
Rayong	30.6	0.9	252.8	54.2	418.6	10.9
Chanthaburi	29.6	1.3	364.4	-28.1	632.6	-12.1
Khlong Yai	29.4	1.2	229.7	-197.0	698.5	-152.1
Over the area	30.5	1.3	134.5	-89.4 -40%	345.9	-84.2 -20%

- NOTES :
- 1) Mean temperature is the average of daily dry-bulb temperature
  - 2) "T" is trace, rainfall amount less than 0.1 mm.
  - 3) "blank" is incomplete data.
  - 4) Temperature and rainfall are preliminary data.

Monthly Current Report  
Rainfall and Accumulative Rainfall  
May 2020

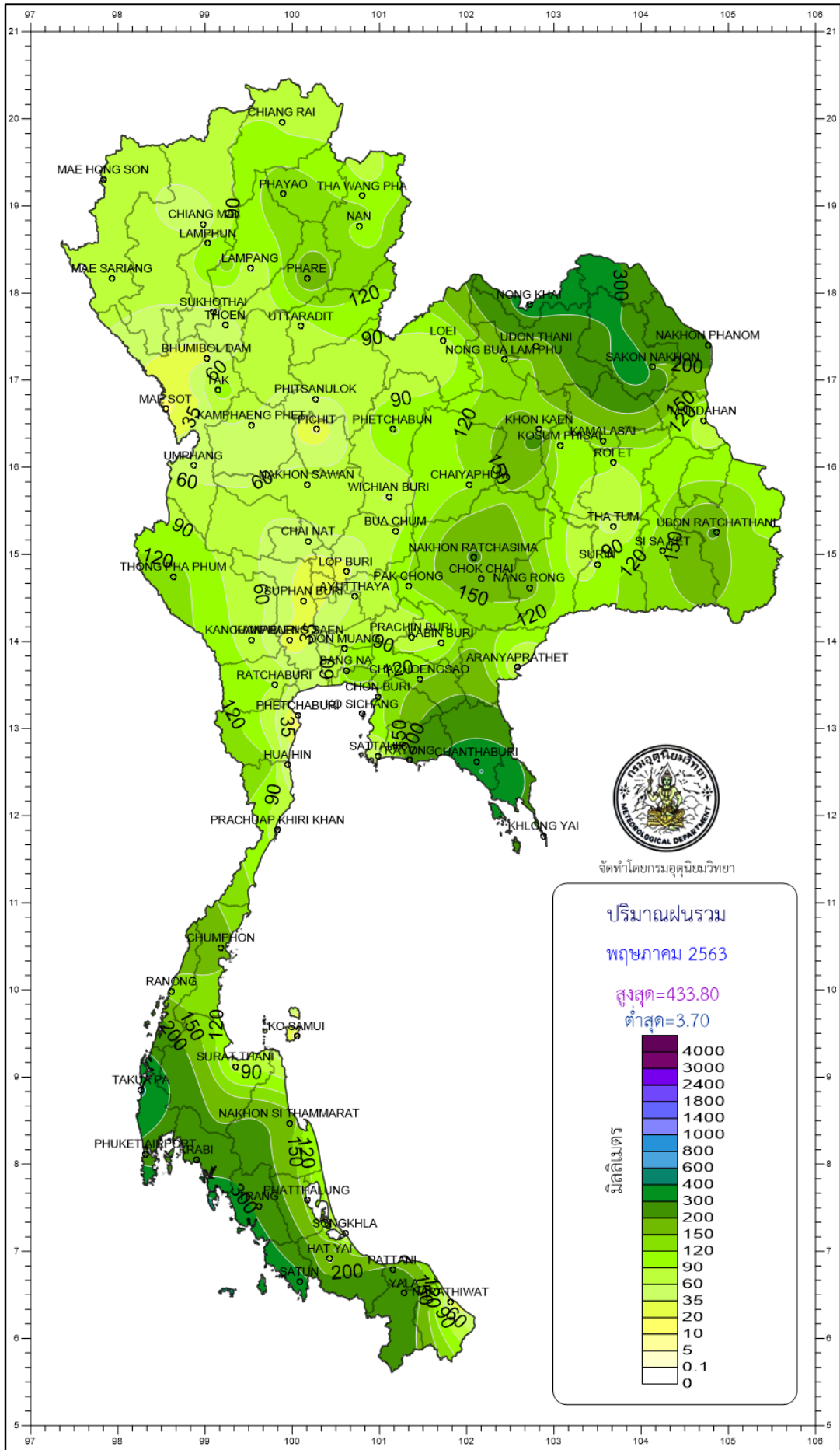
Southern Thailand, east coast

Station	Temperature ( °c)		Rainfall (mm)		Accumulative rainfall (mm) Since 1 January	
	Mean	Above or below normal	Actual	Above or below normal	Actual	Above or below normal
Phetchaburi	31.2	1.8	3.7	-95.8	145.1	-39.7
Hua Hin	30.8	1.5	20.4	-88.5	59.0	-177.3
Prachuap Khiri Khan	30.5	1.6	77.5	-49.4	159.6	-140.8
Chumphon	29.3	1.3	165.4	-25.4	492.4	14.5
Surat Thani	29.3	1.6	76.4	-101.6	124.5	-200.0
Ko Samui	29.9	1.0	14.3	-141.6	290.4	-170.0
Nakhon Si Thammarat	28.8	0.6	177.0	3.2	494.3	-89.8
Songkhla	29.4	0.6	22.5	-97.1	221.9	-155.9
Hat Yai Airport	28.3	0.5	135.0	-12.7	205.2	-214.4
Pattani Airport	29.2	1.0	213.8	76.3	336.0	-8.4
Narathiwat	29.4	1.2	22.9	-119.2	301.3	-186.3
Over the area	29.6	1.1	84.4	-59.3 -41%	257.2	-124.5 -33%

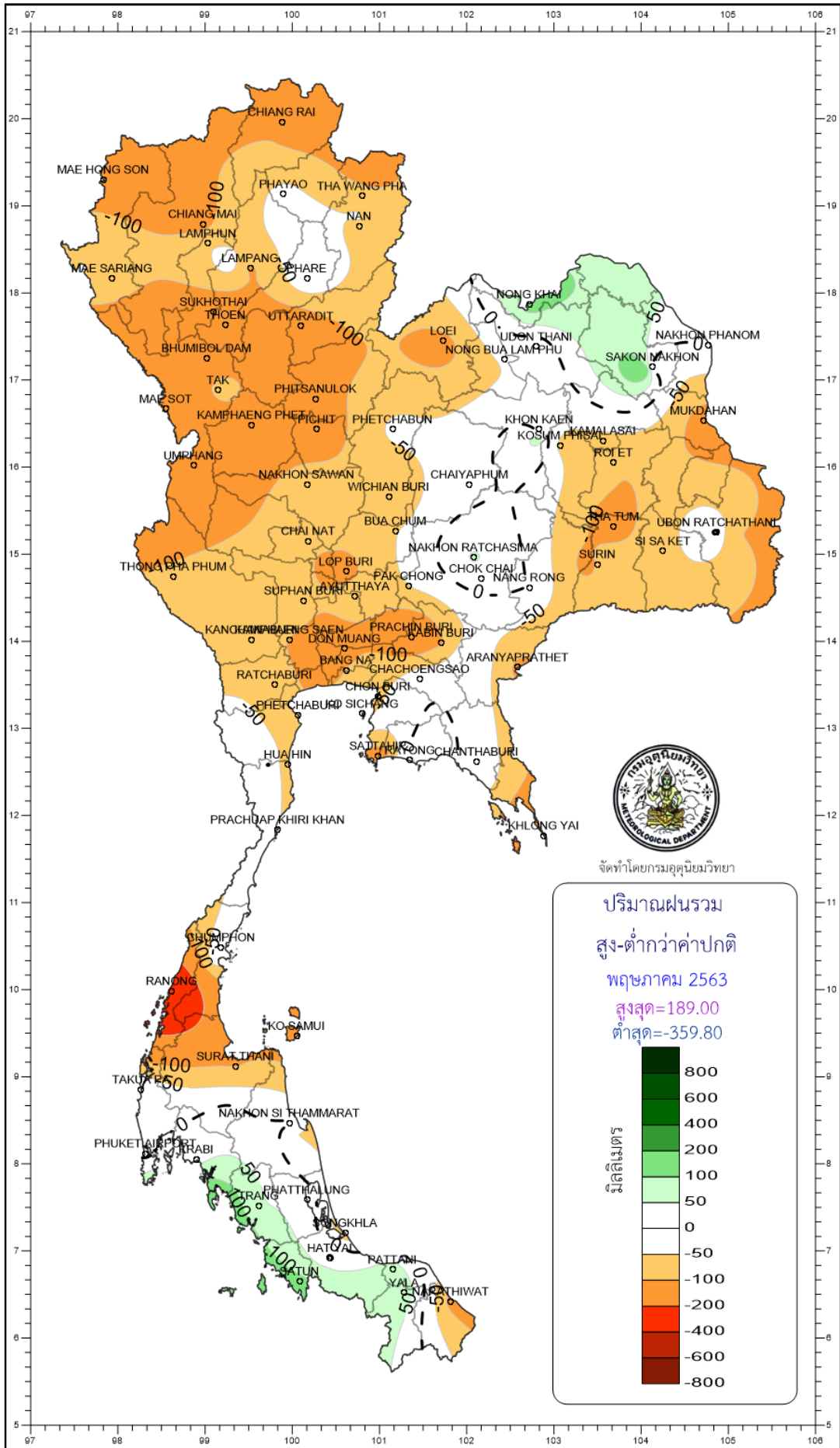
Southern Thailand, west coast

Station	Temperature ( °c)		Rainfall (mm)		Accumulative rainfall (mm) Since 1 January	
	Mean	Above or below normal	Actual	Above or below normal	Actual	Above or below normal
Ranong	29.5	1.8	136.9	-359.7	213.4	-527.0
Takua Pa	28.2	0.3	419.9	-17.6	768.6	-74.0
Phuket	29.5	0.7	324.0	64.5	480.2	-49.9
Phuket Airport	28.9	0.5	267.2	-14.3	445.3	-153.9
Ko Lanta	28.9	0.2	433.8	189.0	532.4	73.2
Trang Airport	28.8	1.1	274.0	56.5	364.6	-129.3
Satun	28.5	0.4	345.9	112.6	673.8	45.5
Over the area	28.9	0.7	314.5	4.4 1%	496.9	-116.5 -19%

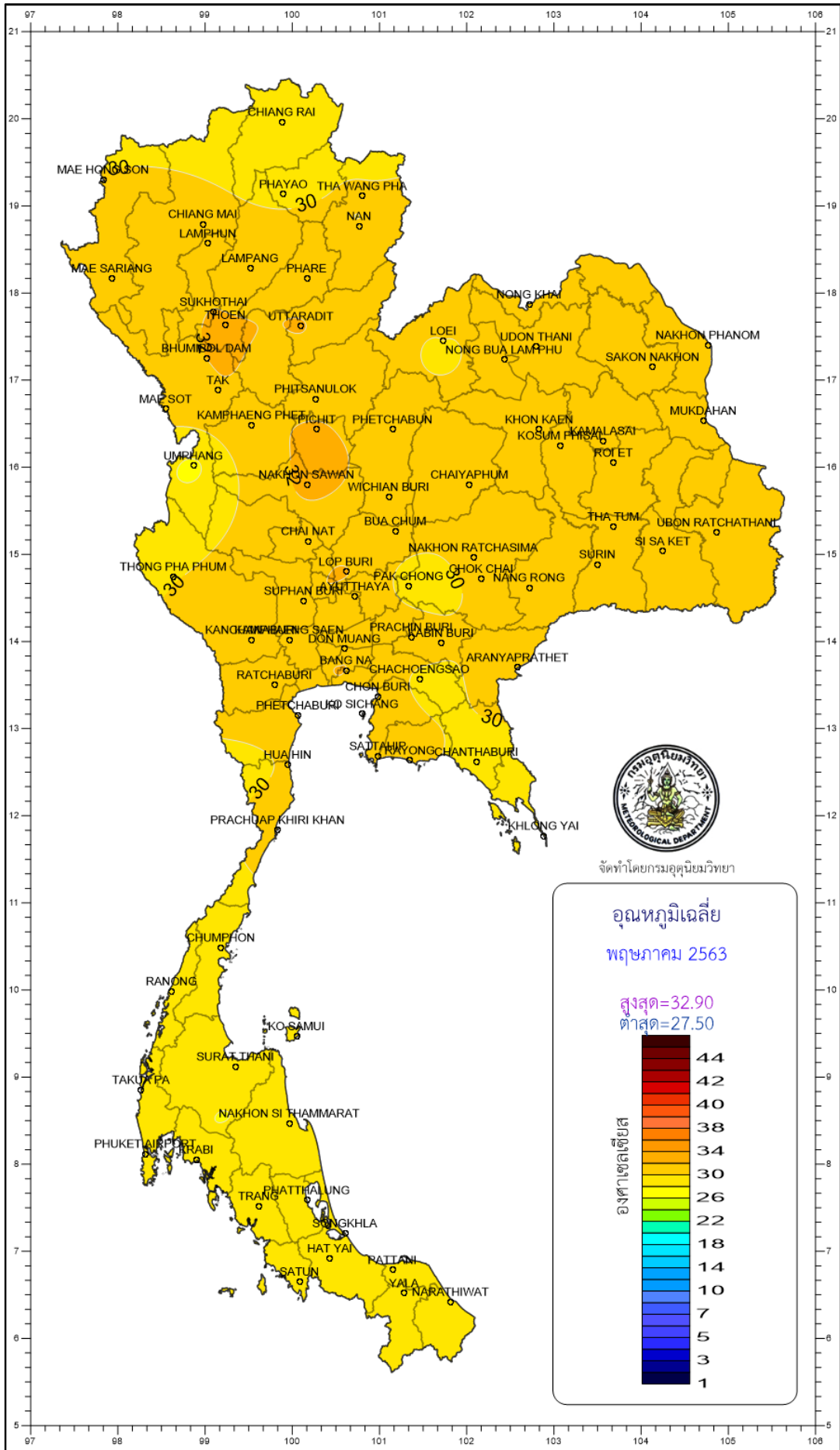
- NOTES :
- 1) Mean temperature is the average of daily dry-bulb temperature
  - 2) "T" is trace, rainfall amount less than 0.1 mm.
  - 3) "blank" is incomplete data.
  - 4) Temperature and rainfall are preliminary data.



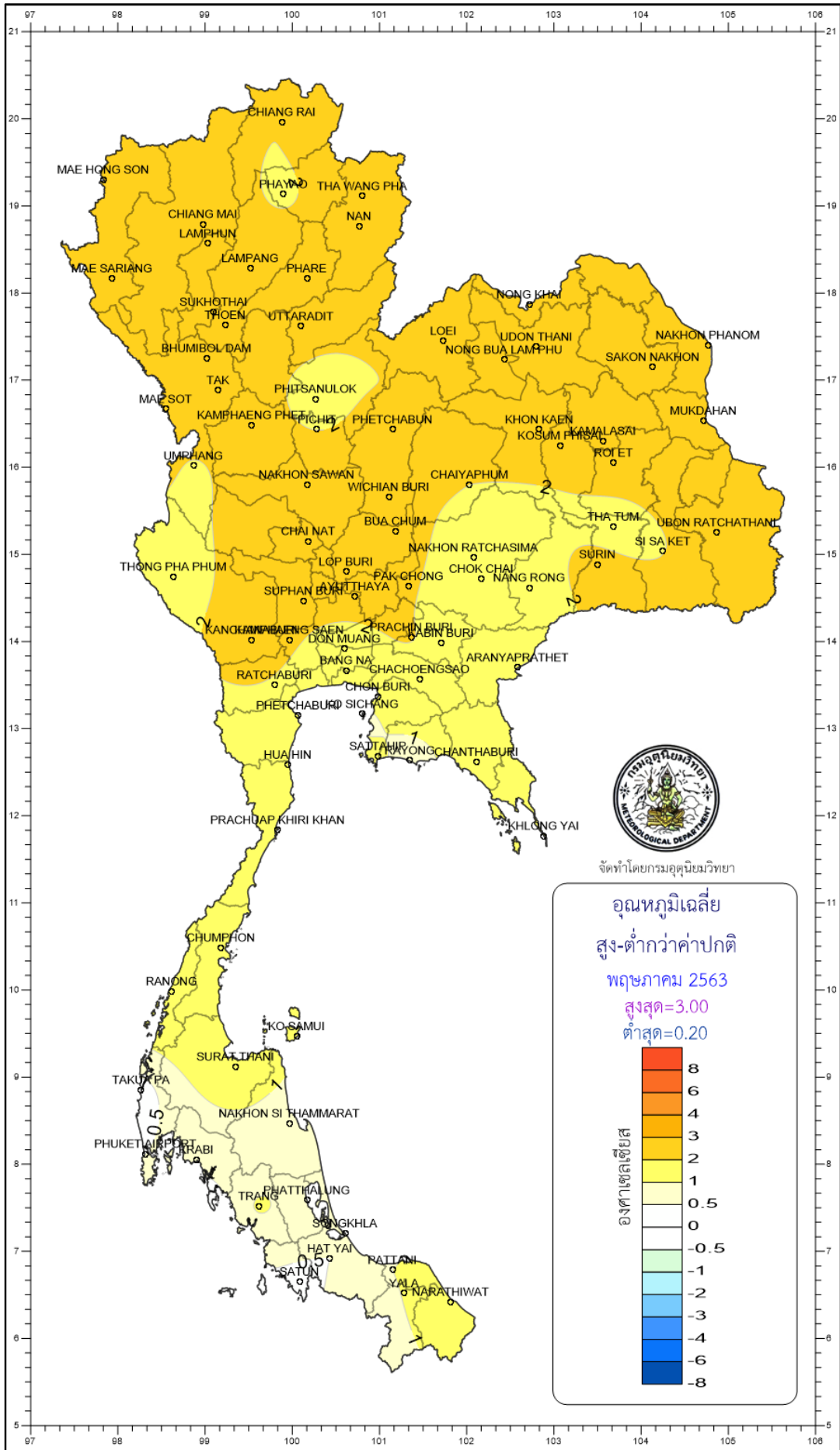
จัดทำโดยกรมอุตุนิยมวิทยา

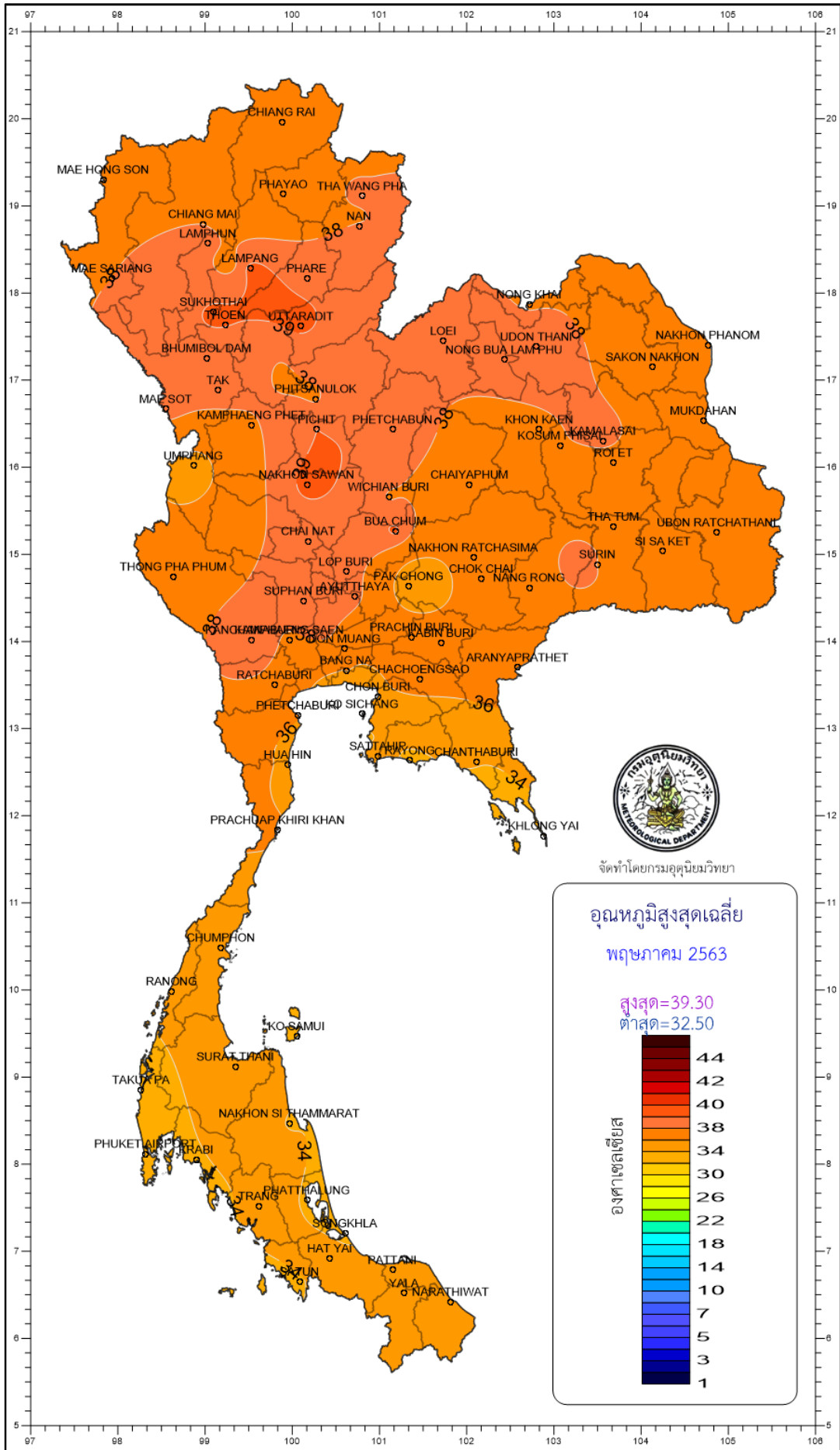




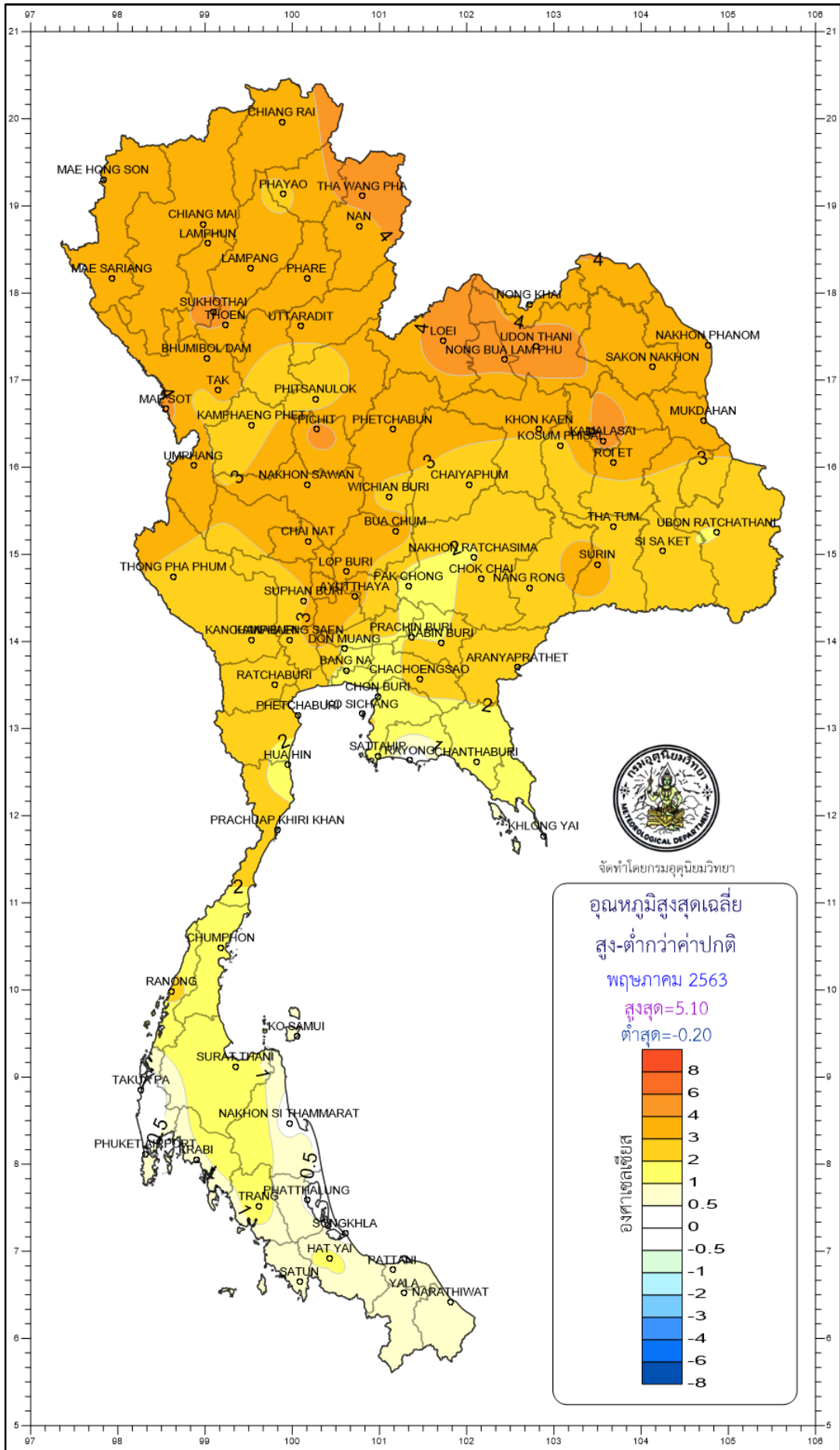


จัดทำโดยกรมอุตุนิยมวิทยา

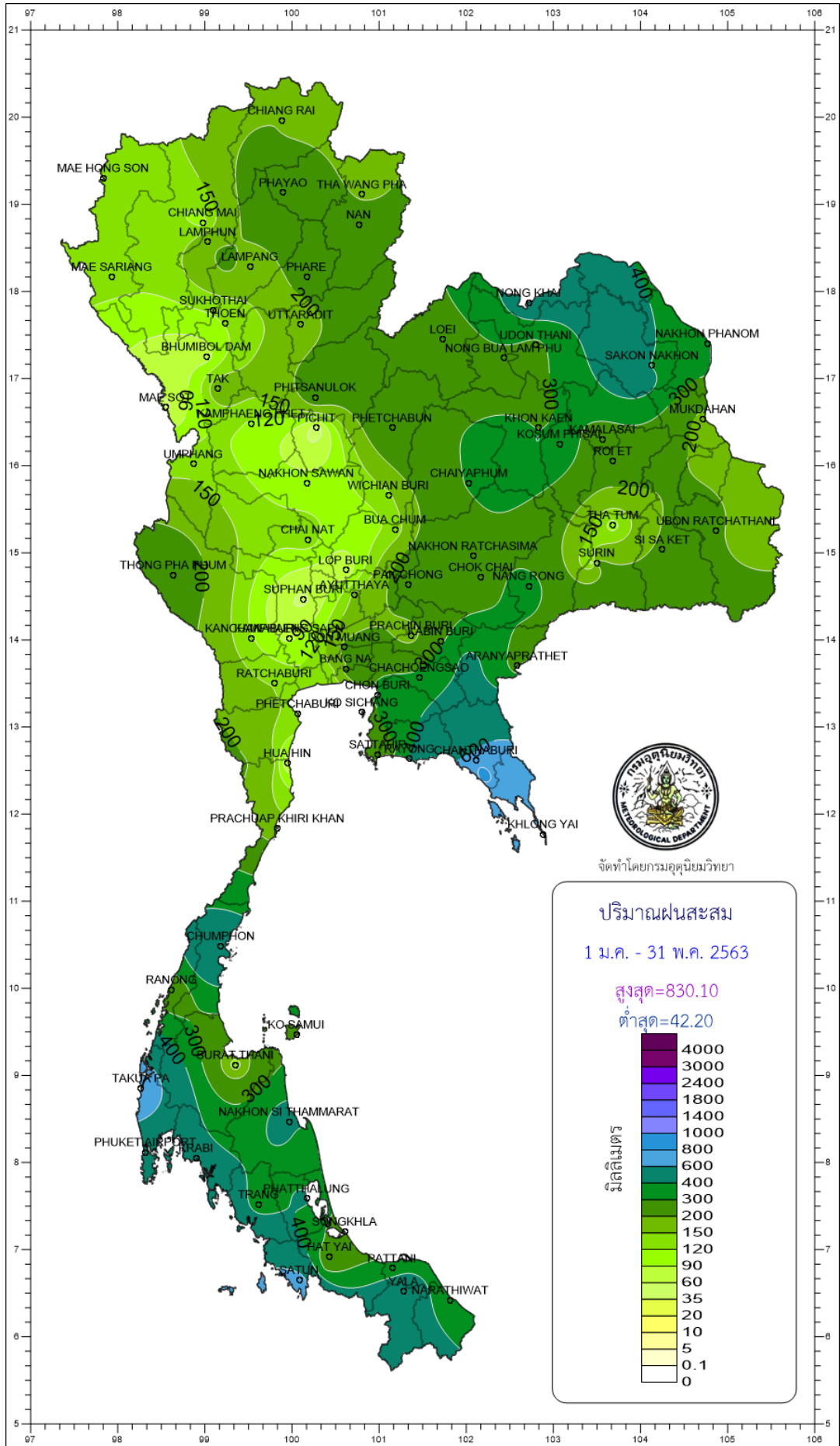




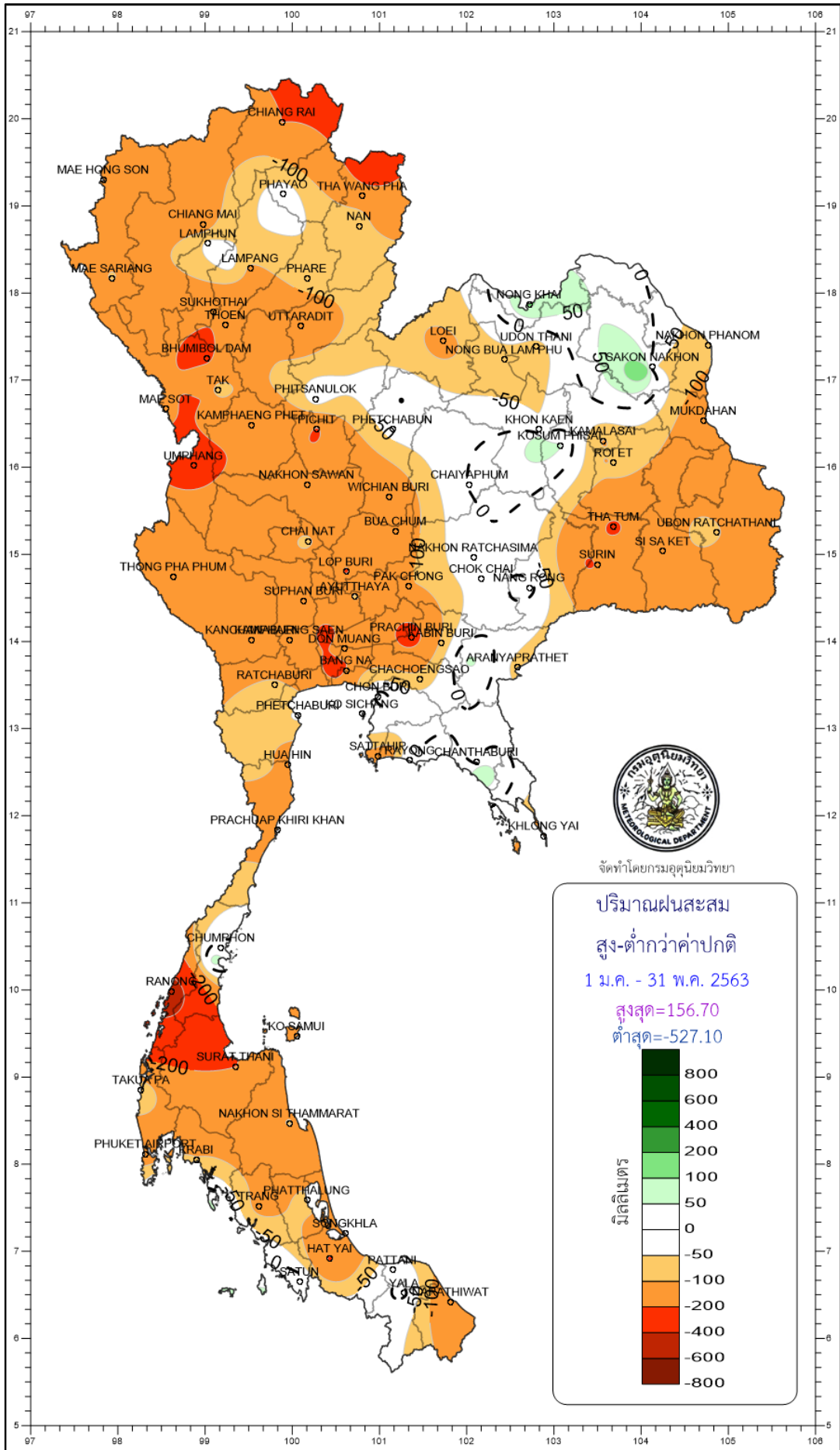
จัดทำโดยกรมอุตุนิยมวิทยา



จัดทำโดยกรมอุตุนิยมวิทยา







จัดทำโดยกรมอุตุนิยมวิทยา